

**OUR**JOURNEY

Shaping your illusions  
Since 1980

1. COMPANY HISTORY
2. SITUATION & DEPARTMENTS
3. VALUES & SERVICES
4. MISSION & VISION
5. OLDIES
6. THROUGH THE YEARS
7. PROJECTS

**FJ CONSULTANTS IS AN ARCHITECTURAL FIRM THAT OFFERS DESIGN SERVICES AND SUPERVISION PROJECTS.**

It began in Lebanon in 1980 and grew from the dedication & vision of its present owner Mr. Farid el Jerdi.

Piece by piece, project by project, our company took shape based on our hard work, innovation, timely delivery and trust. Today we enjoy a solid reputation in the market and amongst our clients which will be the base for our continued success. Our objective is to open new horizons and experiment new architectural fields by using new tools to achieve unique yet suitable designs. While excelling in the national market our ultimate goal is to expand our ideas & visions on a global scale. We want to open people's minds towards infinite possibilities, sensations & experiences, based on our slogan:

"Architecture is more than just an industry; it is an art & a new way of living".



### “VERY ACTIVE PRESENT, NOTABLE PAST AND PROMISING FUTURE”.

A few words describe an approach that satisfies our principles and convictions in the field of Architecture and Construction. Established in 1980, our firm has been since, looking forward for a persuasive idiom with a main objective to create high quality projects through elaboration, development and progress.

Our wide experience enables us to attack different fields of architectural and engineering studies, design and supervision, for both the private and public sectors: from residential and industrial buildings to touristic complexes, luxury villas, offices, commercial towers, infrastructure, as well as rehabilitation and restoration projects.

Since its establishment, FJ Consultants has carried a steadfast position for its proficiency and experience. The firm expanded considerably, thanks to our team of professionals and highly qualified architects and engineers, within an environment of work based on research and communication.

We, therefore, gained our position among the leaders of the market, ranking in the first category, as classified by the Ministry of Public Works, the Ministry of Defense and the Council of Development and Reconstruction.

**OUR AIM IS TO PRESERVE OUR VALUABLE IMAGE AND KEEP ON GOING FORWARD, LOCALLY AND ABROAD.**

Farid El Jerdi



- More than 30 years of Experience
- Class A Office in :  
Building Construction  
Roads
- Reliable Client Database
- Multiple Departments & Services
- Solid Reputation

Our firm's scope of work consists of providing the best suited design for each project, where ideas and architecture converge.

#### **ARCHITECTURE**

##### **PRE-DESIGN**

Pre-design is the preliminary phase discussed by our team of experts, to establish the feasibility and design of a project, satisfying functional, esthetical and technical criteria, upon topographical site surveys and soil investigations.

##### **DESIGN AND SUPERVISION**

- Preparing detailed design drawings, technical specifications, bills of quantities, reports and the like for the purpose of inviting bids for the supply of goods and materials, and the execution of construction works.
- Supervising and inspecting the work on site, controlling contractor's labor, as well as issuing instructions and checking applications for payment.
- Advising, Recommending and Evaluating contractors' claims.
- Measuring and Agreeing contractors' final accounts.

##### **PROJECT MANAGEMENT**

- Coordination of pre-construction activities, including the appointment of specialized consultants
- Coordination of the construction phase, including the development of plans, preparation of high level reports on physical and financial progress, overall management of all contractors and consultants.

##### **AS BUILT DRAWINGS**

Upon the finalization of a project, some changes may be required. If needed, our company provides "As Built Drawings" that are the reproduction of the project as it has been built on site.

##### **INTERIOR DESIGN**

Our interior design work is based on providing all the necessary concept drawings. We also supervise the work on site, for the better development of the project.

##### **ENGINEERING**

A successful project is a successful collaboration between the architect and the mechanical, structural and electrical engineers.

##### **LANDSCAPING**

Our architects and experts combine their efforts to provide the necessary studies for soil treatments and irrigation systems, as well as define the locations of plants to be used etc.

##### **URBANISM**

All the needed information regarding the type and nature of the land to be worked on is carefully studied. A model is then made in order to better understand the land's topography and study the most suitable intervention to be implemented, according to which we draw the final master plan.

##### **MODEL MAKING**

Last but not least, our office provides the model making service with a variety of choices for the different constituents of the model. The project is studied carefully and represented on the needed scale by our team of experts.

Built on a family heritage FJ Consultants will continue to be privately owned by active management and guided by firmly held values.

1. **Ethics:** Uncompromising integrity, honesty, and fairness are at the heart of our company.
2. **Excellence:** We set high standards while constantly innovating and improving.
3. **Environment:** Encourage openness, teamwork, & trust by creating a fun, creative, yet successful & professional place to work in.
4. **Sustainability:** We visualize, plan & act for the long-term good of our company, our customers, and our world.

**RESIDENTIAL PROJECTS**

Several elements are taken into consideration while working on a residential project, where we try to meet the inhabitants' needs, while respecting the environment. We give each building a unique character based on our creative concepts and innovative designs.

**SCHOOLS AND UNIVERSITIES**

Schools are divided into several groups: Preliminary and Secondary, Technical, Hotel Management Schools etc.

We provide all the necessary functions to create an appropriate environment for studying and students' development.

**HOTELS**

From small motels to five stars hotels, our office has worked on several projects, creating each time a design that attracts tourists with its uniqueness, beauty and comfort facilities.

**CENTERS**

Centers can be classified following their functions: commercial, offices, multifunctional etc.

We have worked on several ones that differ by their characters, requirements and surroundings, providing each time a design that successfully meets all the requirements.

**TOURISTIC COMPLEXES AND COUNTRY CLUBS**

These leisure based projects, are worked on consistently, depending on the region where they are located. Each one is studied in a way to provide all the necessary functions that host different activities.

**INDUSTRIAL PROJECTS**

We have worked on several industrial projects such as factories, workshops etc. They are studied according to the norms of safety codes that we transform into creative architectural concepts.

**PUBLIC BUILDINGS**

The public sector is a domain in which our firm has worked on several types of projects ranging from ministries to hospitals.

Our collaboration with the Lebanese Government has been fruitful and spans over a large period of time, during which our office provided well studied documents and appropriate designs.

**INFRASTRUCTURE**

Our office provides all the necessary studies for the successful completion of tender documents and drawings necessary for the development and construction of infrastructure projects such as: sewage systems, water networks, road planning, tunnels development, sidewalks construction etc.

**OUR MISSION WILL ALWAYS BE TO EXCEED EXPECTATIONS BY PROVIDING HIGHLY INNOVATIVE & RESPONSIVE SOLUTIONS TO OUR CLIENTS, BASED ON OUR ETHICAL & PROFESSIONAL APPROACHES.**

**TO EXPAND INTERNATIONALLY BY:**

1. **Believing** that every construction is unique & treating it as such
2. **Developing** new trends, visions & ideas
3. **Exploring** new subjects such as the world of optical illusions in architecture
4. **Creating** new solutions & ways of living

## INTERNATIONAL COMPETITIONS



Cultural Center



Olympic Hall



The Dancing Queen

## CULTURAL CENTER

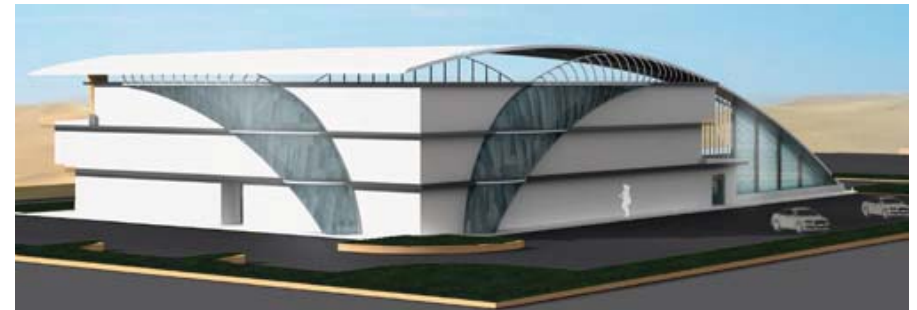
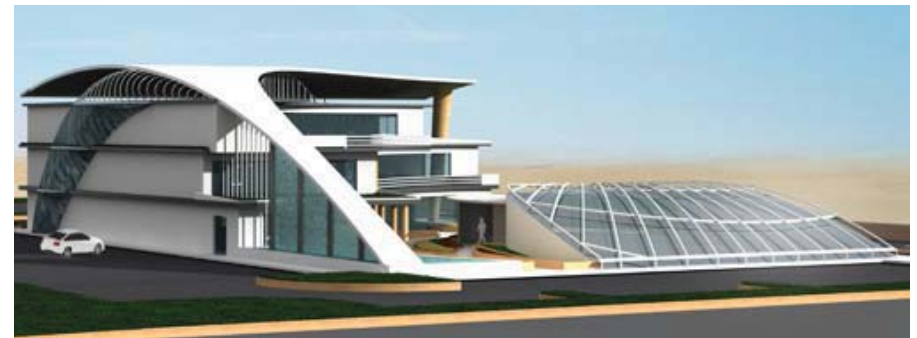
Location: Erbil, Iraq  
Type: Public Building  
Year: 2012  
Work: Design

The design of this building is inspired from the forms of the architectural buildings of the surroundings, which symbolizes the rise of Erbil city. The main shape of the three superposed floors is a clear identification of positive and negative green spaces.

This project is a 3 floors cultural center that hosts many functions such as an administration, a meeting room, a conference hall etc. There is also a covered cinema located outside out of the main building; to which we provided a protective canopy.

The cinema is facing a beautiful waterfall that adds a special touch to this unique project. The materials used and the shape of the different elements that form an integral part of the buildings adds the creative design distinguishing it from the rest.

The roof is elevated from the building providing ventilation against high temperature. Beautiful landscaping and water fountains add a magical touch to this utterly creative project making it a unique structure of its kind and making us win first place.



Area	3 000 m <sup>2</sup>
Time of Completion	One Week

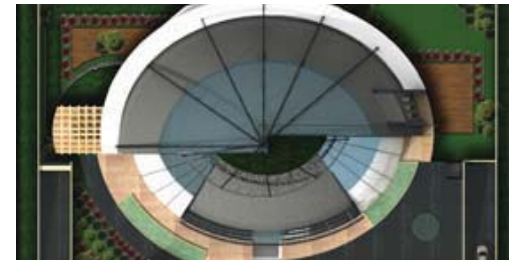
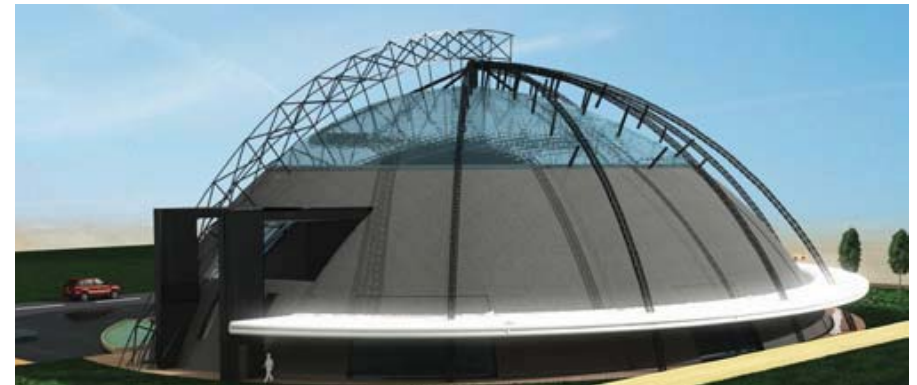
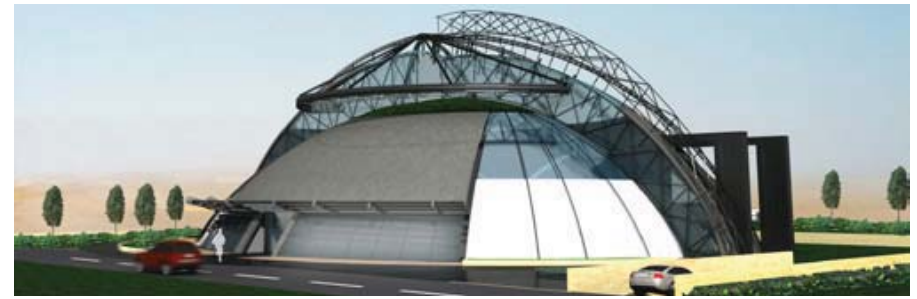
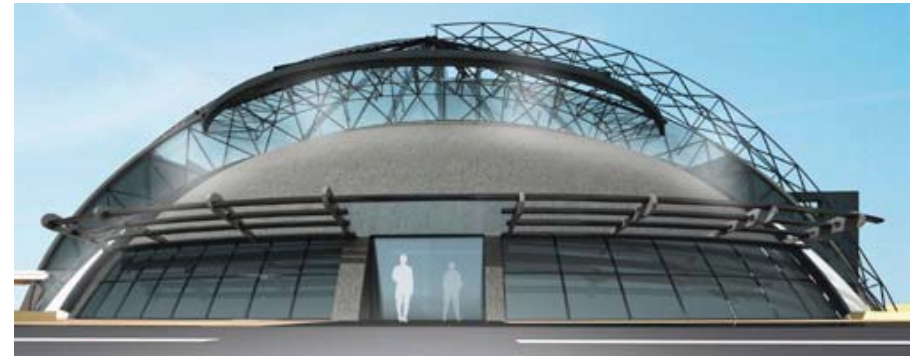
## OLYMPIC HALL

Location: Erbil, Iraq  
 Type: Public Building  
 Year: 2012  
 Work: Design

The project consisted of providing an Olympic hall for 800 people located in the region of Erbil in Iraq. Our design was based on two interconnected ovals which shape determines the various functions they host.

A cafeteria with an open terrace that gives on our rich landscape was added. We also divided the project in order to have various entrances: a main one for the public, a secondary entrance for the players that connects them to their lockers and changing rooms and a private access for the VIP that is directly connected to the green platform on the roof.

Our unique concept and our unique use of materials and structures is what sets this project apart, distinguishing us from the rest of the participants and making us win first place.



Area	1 500 m <sup>2</sup>
Time of Completion	One Week

## THE DANCING QUEEN

Location: Dbayeh, Lebanon  
Type: Skyscraper  
Year: 2012  
Work: Design

Our Skyscraper is dedicated to unifying the Lebanese population through music, creating energy through movement and best of all providing a safe and unique experience where everyone can have a good time. These were the main ideas behind our concept. The result is a tower dedicated to music, with its top floor as a huge nightclub, where energy is collected from its dance floor, made out of piezoelectric materials, due to the dancers' movements.

The design of the tower is inspired by the shape of the music note and rotates towards the sun, embracing the view and its location all the while being interconnected by steel elements emerging from the sea enhancing its movement. The skyscraper hosts a multitude of restaurants, pubs and clubs within its main core, and various other ones such as: exhibition rooms for different types of arts, concert halls, operas houses, centers for therapy through music, a public library and parks.

The main tower is connected to a public beach where restaurants are implemented alongside the shore. It's a green and self-sufficient project where electricity is generated by two means: solar panels during the day and movement mainly during the night.

Dancing, listening to music and enjoying nature represent peace; this project is a huge symbol for a peace much longed for. It offers hope for Lebanese and makes them aware of the environmental issues that their country faces, allowing them to contribute to the preservation program embodied in our tower: "The Dancing Queen".



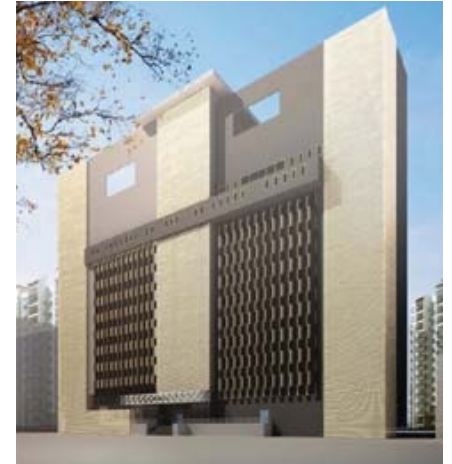
Area	150 floors
Time of Completion	One Month



## **PUBLIC BUILDINGS**



Qatalum



ISF Building



Qatalum



Zalka Municipality

## FJCONSULTANTS PROJECTS

	CLIENT	LOCATION	AREA m <sup>2</sup>	YEAR
1	Ministry of Commerce	Der el Amar	450 beds	1980
2	Ministry of Public Works	Baalback	8000	1983
3	Ministry of Public Works	Jounieh	1700	1984
4	Ministry of Public Works	Jdeideh	2000	1984
5	Ministry of Public Works	Beirut	2500	1984-1985
6	Ministry of Public Works	Beirut	4000	1984-1988
7	Ministry of Communication	Dora	1200	1986-1990
8	Mousis Agop Cherikian	Bourj Hammoud	215	1991
9	Mousis Agop Cherikian	Bourj Hammoud	860	1991-1993
10	Ministry of Public Works	Kfarmilki - Kfarfila	75000	1993
11	Ministry of Public Works	Der el Amar - Rmei- leh - Roum - Lebbaa Brih- Jins Neyah	15000	1993
12	Moussa Cherikian	Bawchrieh	8600	1996
13	Mona Cool	Kab Elias	11000	1999
14	Ministry of Commerce	Bir Hassan	9000	2002
15	Der el Amar Municipality	Der el Amar	4000	2003
16	Qatalum Aluminum	Qatar	22875	2008-2011
17	Internal Security Forces	Ashrafieh	30146	2009
18	Zalka Municipality	Zalka	1715	2011

### QATALUM - Qatar 2008 - 2011



## TAWAR'S WORLD

Location: Qatar  
 Type: Commercial  
 Year: 2012  
 Work: Exterior Design

This project is the continuation of the first one: Tawar Mall. It is a city inside a city where the design has been separated by the infiltration of green strips inside the project. It hosts various function and activities all combined in one territory, where the visitors can find everything they have hoped for and more.

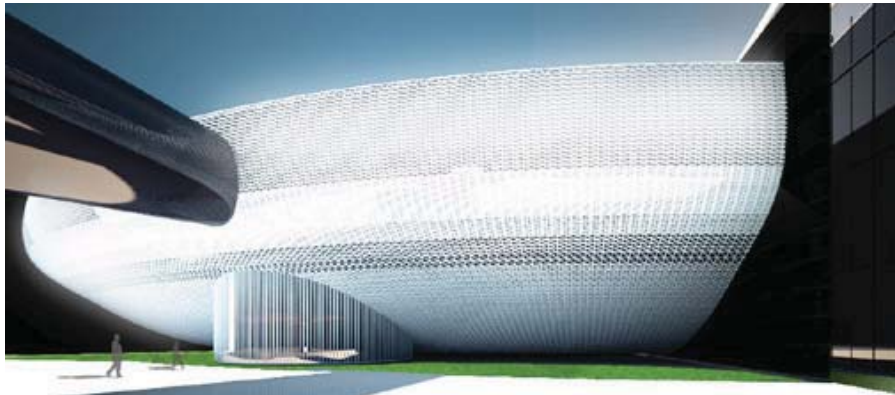
The roads connecting several parts of the buildings also act as a separator and a common mutual link creating a rich architectural language of different forms and functions

The skin of the Arabic pattern is also used in this design in order to continue the feeling of appropriation to the land, which is the base of a diverse yet unique sense of approach that differentiates between this project and Tawar Mall, all the while creating an obvious link between the two.

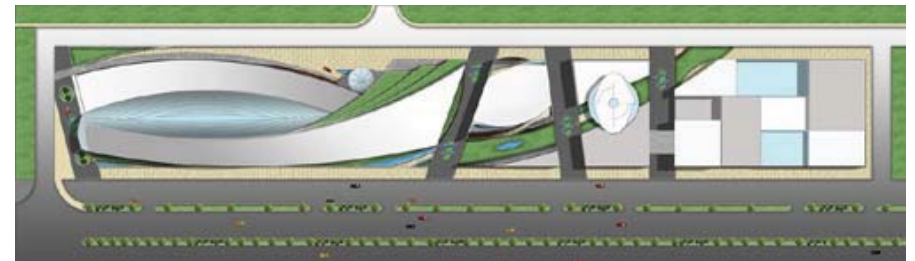


Option 1

Area	375 00 m <sup>2</sup>
Time of Completion	1 month



Option 2



Option 3





## QATALUM

Location: Qatar  
Type: Aluminum Factory  
Year: 2009 – 2011  
Work: Design and Supervision

Qatalum is the biggest aluminum factory in the world. The richness of the project was reflected in the design: the square, symbol of purity and complete harmony. The pattern created was squares within squares that repeat themselves to infinity reflecting the splendor of the space.

We worked on five main buildings and their surrounding landscapes: administration, service center, workshop, mosque and guardian house .

Every building was studied as an independent entity only linked by the repetition of the pattern and the transparency of the huge open spaces, creating an ambiance of freedom and richness.

International standards were applied in order to meet the requirements of the building code and construction in Qatar.

We also used the pattern to define the passages and the facades, linking them together in an innovative way. A modern and simple approach was used for the rest of the building in order to highlight that pattern in a subtle way.



Service Center

Area	22 875 m <sup>2</sup>
Time of Completion	Three years
Achievements	Biggest Aluminum Factory



Workshop



Administration



Administration



Service Center



Mosque



Administration - 3D



Administration - 3D



Overall View



Overall View



Administration - Interior as built



Administration - Interior as built

## ISF BUILDING

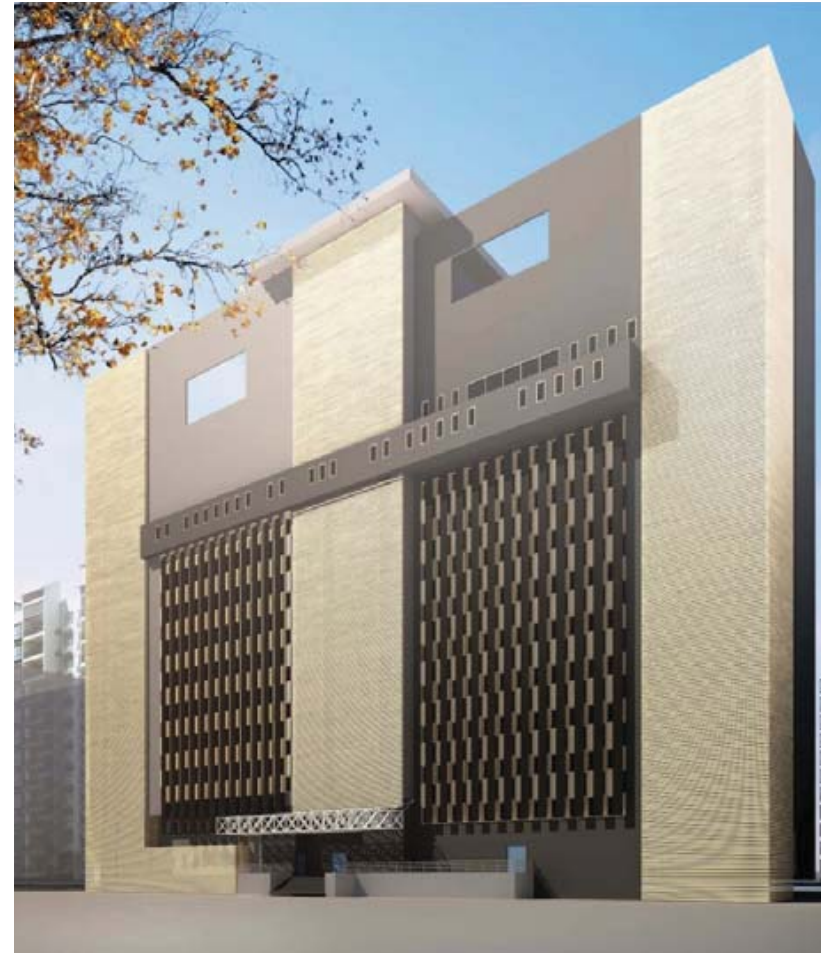
Location: Ashrafieh, Lebanon  
Type: Governmental Building  
Year: 2010  
Work: Design and Supervision

The uniformity of the volumes and their size reflect the grandiosity of such a project that is designed with the highest standard of construction and security for : the Internal Security Forces of Lebanon. These standards were also applied to the Helipad on the roof.

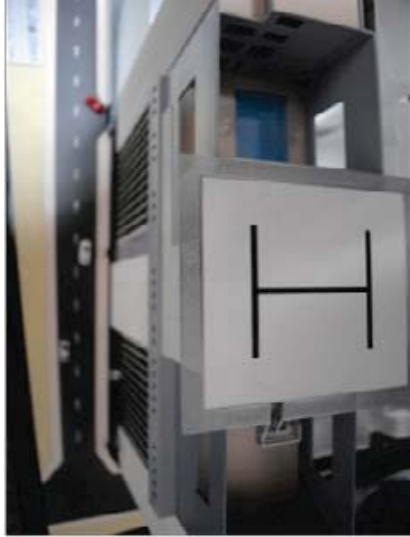
The excellence of this achievement lies in the design, where optical illusions are used making this building a first of its kind in Lebanon. Our company is the proud beholder of that complex idea that protects the inhabitants from possible attacks while still allowing them to have openings. The facades seem to be a complete blur for the passers, who cannot concentrate on the windows' location.

The building is in constant undulation and creates the illusion of a moving element that doesn't seem to rest, faithful to its duty: providing the maximum security for its users.

"When Grandiosity meets Genius".



Area	30 146 m <sup>2</sup>
Time of Completion	Nine months
Achievements	First of its kind in the world



## ZALKA MUNICIPALITY

Location: Zalka, Lebanon  
Type: Official Building  
Year: 2011  
Work: Design & Supervision

Zalka's municipality needed to relocate to a bigger and better building. This design is a statement unique of its kind, where all Zalka's history is retraced.

The unique shape of its cultural center reflect the high standards used in the excellent quality of the design.

The simplicity and elegant uniformity of the juxtaposed building create a harmonious link between the two elements, giving each one its own glorious moment

The municipality is made in "memory" of what was lost. Thus the center was designed based on the shape of the lemon and orange trees that were found everywhere.

The square represents man's invasion that squashed that fruit, breaking it in half and spreading its parts, creating gaps between them, that turned to positive and negative spaces within the library.



Area	1 715 m <sup>2</sup>
Time of Completion	Four Months

## HOTELS, TOWERS & OFFICES



Barsha 5 Stars



Translucent



Badawi Headquarter



Zen

	CLIENT	LOCATION	AREA m <sup>2</sup>	YEAR
1	Hanna El Chaer	Bouchrieh	4 342	1984-1985
2	Anis Zaidan	Bouchrieh	3036	1985-1986
3	Maroun Khoury	Dekwaneh	1874	1988
4	Yad El Ikhwa	Der el Amar	6400	1998
5	M.A.K.	Achrafieh	250	2007-2008
6	Sheikh Hamad Khamis El Ghuwais	Dubai	66000	2007-2009
7	Credit Bank	Sin el Fil	24170	2009
8	Credit Bank	Sin el Fil	20720	2009
9	Badawi Group	Ghazir Mall	7160	2011
10	Badawi Group	Zouk Mosbeh	6841	2011



## BARSHA 5 STAR

Location: Barsha, Dubai.  
Type: Hotel  
Year: 2007 - 2009  
Work: Design

When a great concept meets refinement, a five star hotel is born. The luxurious tone of the project is reflected in the design inside out.

Its good location was stressed upon through the glass oval shape reproducing the intersection of the two main streets.

The grandiosity is emphasized by the structural elements that frame the glass shape, making a clear statement of magnificence and strong sense of presence.

The shapes and variations of sharp and smooth edges that form the façade, create a sense of harmony since they are all combined in a smart way forming a building unique of its kind.

These concepts are also visible in the interior of the hotel, where huge double spaced hallways welcome the visitors. They instantly feel at ease in a spacious yet cozy atmosphere, where warm colors are used. The panoramic lifts create a sense of a vertical link between all the floors and the main entrance.



Area	66 000 m <sup>2</sup>
Time of Completion	One year

## TRANSLUCENT

Location: Sin el Fil, Lebanon  
Type: Office Tower  
Year: 2009  
Work: Design

Lots of office towers are now rising in the area of Sin el Fil, where this project is located.  
The client turned to us in order to design a 22 floor tower, hosting as many offices as possible.

The design was made in respect to the surrounding as well as the plot that was determinate by an oblique street tracing the oblique solid element that transcends our tour.

The offices were designed in a way to optimize the internal use of space in a flexible manner, allowing buyers to arrange it according to their needs.

The elegant tower distinguishes itself from other ones by its unique shape, and smart functions: the offices are clearly separated from the commercial stores on the ground floor by an imposing yet smooth canopy, creating a new and impressive environment.

Area	24 170 m <sup>2</sup>
Time of Completion	Two Months



## ENVELOPE

Location: Sin el Fil, Lebanon  
Type: Offices and Commercial  
Year: 2009  
Work: Design

A glass envelope embraced by vertical steel strips acting as louvers, stamps the area of Sin el Fil.

The glass structure allow the users to benefit from the view all the while being protected from the sun because of the use of the steel shades.

This office tower distinguishes itself by its imposing yet smooth structure, that overlooks the city. Its original design gives it a unique look that attracts the eye and set these offices apart from the rest.

Area	20 720 m <sup>2</sup>
Time of Completion	Two Months



## BADAWI HEADQUARTERS

Location: Zouk, Lebanon  
 Type: Offices and Commercial  
 Year: 2011  
 Work: Design and Supervision

Badawi Group needed a new empire for their growing business, and their 42 glorious years in the Lebanese market. Based on this concept, the idea was to reflect their hard work and its importance, through the structure and design of their headquarters, where the location of their offices is emphasized.

Badawi Group is growing. And so is our design.

This concept gives a majestic feel to the volume that embodies their offices, clearly distinguishing it from the rest of the elegant building and its offices.

The commercial floor is also linked to the rest through the same spirit represented by the oblique element that forms a passage at the bottom and its cover on the upper part. This dynamic outline projects life into the shapes and represents the ambition and the driving force that was behind such a successful enterprise.



Area	6 841 m <sup>2</sup>
Time of Completion	Six Months
Achievements	Symbolizing of their success







## ZEN

Location: Ghazir, Lebanon  
Type: Shopping Center  
Year: 2011  
Work: Design

The concept of this project is based on the introduction of a new powerful figure that embraces the whole ensemble of the building. Our L shaped envelope is connecting the various circulation elements, setting the building apart from the surrounding and typical structures.

Wooden frames were introduced on an irregular basis creating a uniform yet original outlook.

The combination of materials, textures and creative volumetric are the keys behind the successful design that will act as a landmark for the city of its location, Ghazir.



Area	7 160 m <sup>2</sup>
Time of Completion	One Month
Achievements	Innovative Design



## BAKERY

Location: Erbil, Iraq  
Type: Interior Project  
Year: 2012  
Work: Design

This bakery is located in very busy area in Erbil, and will thus be an important meeting point of the region's residents. Our design is based on warm attractive color that gives a radiant and cozy ambiance.

The main attraction is the bakery center that directly gives to the display of many wonderful and mouth-watering items.

The modern design appeals to passersby from the street, and adds a unique touch to the neighborhood. The appeal of the bakery is thus in the delicious foods it serves and in the creative designed it is based on.

Area	1 600 m <sup>2</sup>
Time of Completion	3 weeks



**LANDSCAPE, URBANISM  
& INFRASTRUCTURE**



River Promenade



River Promenade

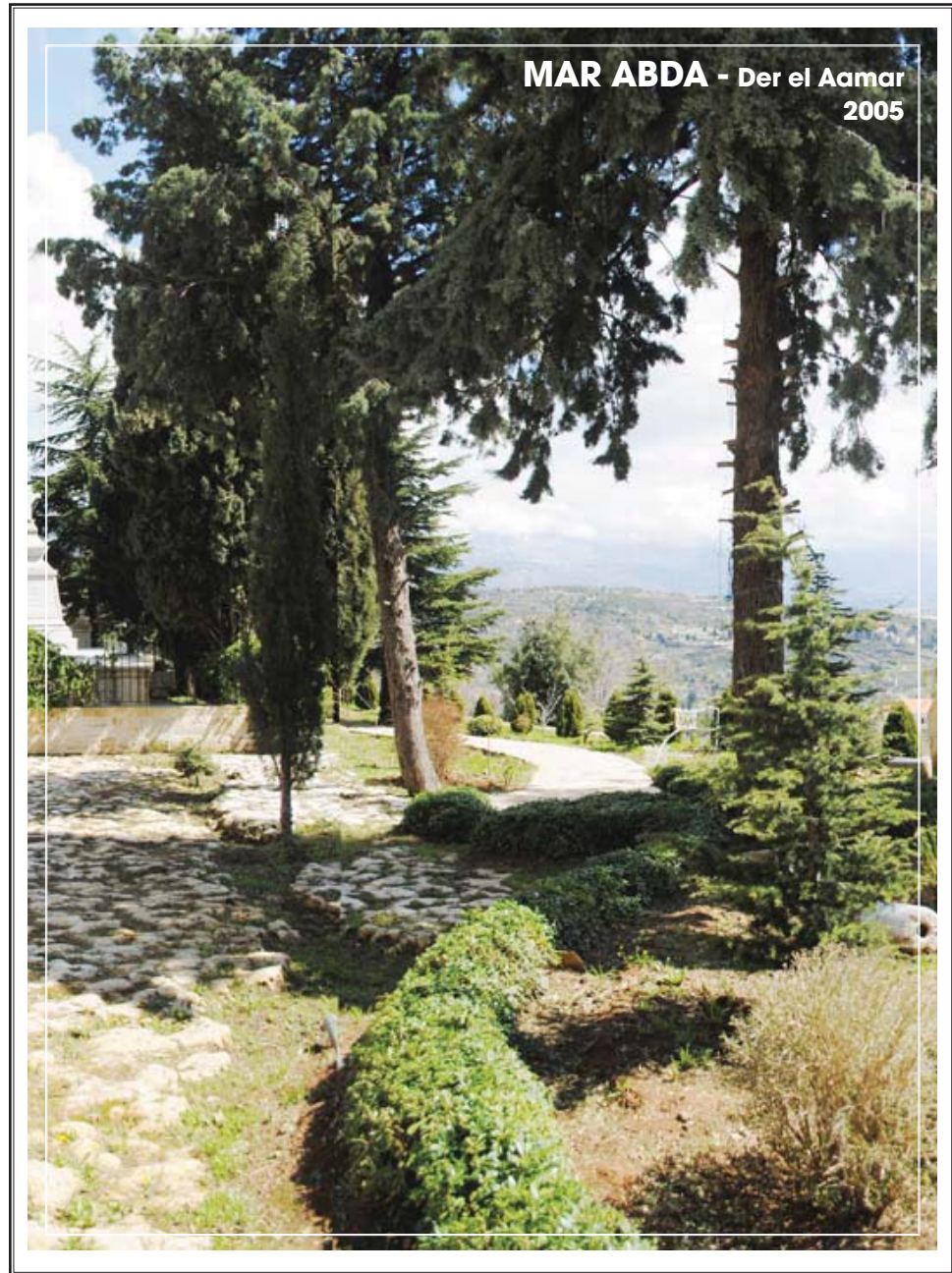


Kiosk Event



Kiosk Event

	CLIENT	LOCATION	AREA m <sup>2</sup>	YEAR
1	Ministry of Housing	Der el Amar Brih, Baakline, Rmeileh	10000	1982-1987
2	Ministry of Housing	New Jounieh, Sahel Alma, Haret Sakher	6000 lm	1994-1995
3	Ministry of Housing	Lebaa, Kfarfila, Roum, Kfarmilki	5000 lm	1994-1996
4	Ministry of Public Works	Jounieh	20 000 lm	1994-1995
5	Ministry of Housing	Chieh Souk Mouawad,	4000 lm	1995-1996
6	Ministry of Housing	Der el Amar Laat, Jrebta, Taraya	6000 lm	1995-1996
7	Ministry of Public Works	Souk el Gharb	80 000 lm	2002
8	Ministry of Public Works	Der el Amar	140000 lm	2002
9	Ministry of Public Works	Safra,Bouar,Oqalbe	600 Hectares	2003-2004
10	Beirut Municipality	Beirut	60 000	2003-2008
11	Ministry of Public Works	Jezzine Caza	20 000 lm	2005
12	Beirut Municipality	Beirut	20480	2007-2011
13	Beirut Municipality	Beirut	14 Tunnels	2009
14	Antelias Municipality	Antelias	1500	2010
15	Antelias Municipality	Antelias	1000	2010



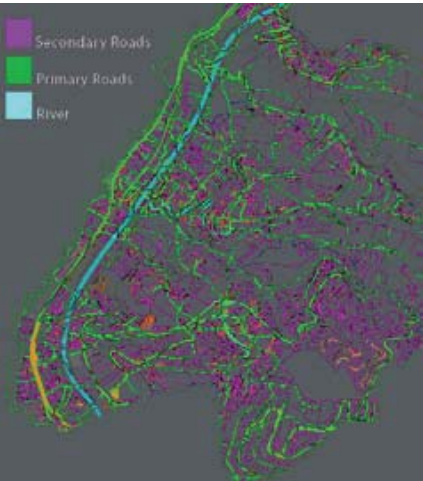
URBANISM SAFRA - BOUAR - OQAIBE

Location: Safra- Bouar - Obaibeh  
Type: Urbanism  
Year: 2003 - 2004  
Work: Design and Analysis

The study consists of the urban design of six hundred hectares of land in the regions of Safra, Bouar and Oqaibe.

A wide statistical analysis took place in order to better understand and grasp the following features of the area: its demography, geography, history, social expansion, roads and infrastructure in order to propose an adequate master plan.

Area	600 Hectares
Time of Completion	Eight Months



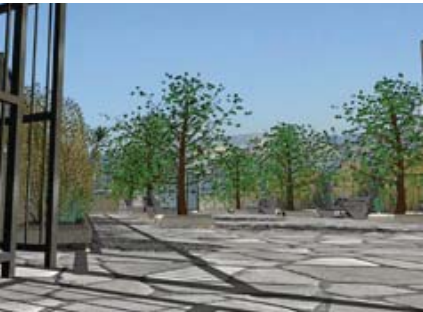
**PUBLIC GARDENS**

Location: Beirut (Al Sanayeh, Al Attal, Al Mar'a el Moukawima, Al Mefti Khaled, Al Yasouiyeh, Sioufi, Karm el Aris and William Hawy)  
Type: Landscaping  
Year: 2005 - 2008  
Work: Design and Supervision

Beirut has several Public Gardens that are in bad condition and in desperate need of rehabilitation. Hence, our work consisted of improving them, creating new green spaces and working on the landscape, designing new fountains and walkways, replacing the materials of the sidewalks among other improvements.

All of this was done to produce a green and calm atmosphere where the citizens of Beirut can come and enjoy a gathering with their friends and family, trying to leave the stressful city life behind.

Therefore, our job was to rehabilitate old pieces of heaven that exist but are mostly closed to the public, participating in bringing back a little calm in people's lives.



Area	60 000 m <sup>2</sup>
Time of Completion	Eight months
Achievements	8 Beirut Gardens

## RIVER PROMENADE

Location: Antelias, Lebanon  
 Type: Landscaping Project  
 Year: 2010  
 Work: Design

As the green areas of Lebanon start diminishing, a desperate cry for help is being spread among the citizens of different cities. Antelias' municipality is one of the few that is listening to the ongoing protests, through the rehabilitation of its famous river.

Our design for this project was based on the infiltration of several green strips of well being inside the city. These strips start at the beginning of the river where an ancient monument is situated, and finish at the location of another ancient building, embracing its history.

We divided the space into several areas: green landscaping, a walkway for pedestrian and another one for bicycles, and created different levels in order to separate the different passages from each other, so every user can be free and enjoy his/her activity.

Pergolas were also added in order for the passers to sit and enjoy the site of the river, with its new trees, plants, flowers and fountains. We also included lighting all along the passages making the scenery more attractive because of their night reflections on the water.

All of these elements created an atmosphere for everyone to come and relax, enjoying a piece of nature in the heart of a crowded city, that is aiming for a better future.



Area	1 500 Lm
Time of Completion	Four Months



## KIOSKS EVENT

Location: Antelias River, Lebanon  
Type: Commercial  
Year: 2010  
Work: Design

Following the initial idea, and in order for every aspect of the project to be covered, we were asked to design kiosks that will be implemented alongside the Antelias River, as the final part of the renovation process.

All the kiosks are designed in an introverted way, in order to have a view on the river itself.

Based on this, different volumes emerged with the purpose of embracing the water, sometimes repeating its ripples in the design, sometimes letting it enter the terraces.

The creative design, fits in perfectly with the fun atmosphere of the promenade adventure, where different elements are carefully studied in order for visitors to appreciate the richness of the details and the various experiences that exists in this location.

Area	400 m <sup>2</sup>
Time of Completion	Two Weeks





## RESTORATION



Lebanese University



Serail Der el Amar



Mar Abda' s Church



Souk el Ghareb's Convent

	CLIENT	LOCATION	AREA m <sup>2</sup>	YEAR
1	Ministry of Public Works	Der el Amar	16000	1983-1985
2	Ministry of Public Works	Masnah	10000	1985
3	Ministry of Public Works	Der el Amar	6500	1986
4	Ministry of Communication	Dora	1200	1987
5	Ministry of Public Works	Beirut	3000	1990
6	Ministry of Public Works	Baalback	1500	1994
7	Lebanon & the Gulf Bank	Dora	4000	1995
8	C.D.R	Der el Amar	16000	1997-1999
9	Ministry of Public Works	Der el Amar	1400	1998
10	Fund For The Displaced	Chiah	1000 Im	2001-2003
11	Fund For The Displaced	Sawfar	1000 Im	2001-2003
12	Fund For The Displaced	Souk El Ghareb	1200 Im	2001-2003
13	Fund For The Displaced	Souk El Ghareb	1400	2002-2005
14	Priesthood of Mary	Dert el Amar	700	2005



## LEBANESE UNIVERSITY

Location: Der el Amar, Lebanon  
Type: University  
Year: 1983 - 1985  
Work: Restoration

This Hotel Management School is one of the earliest projects handled by our company.

The intervention consisted of rehabilitating the building that was designed to host more than 1 200 students. We were thus careful and persistent to preserve the unique character of the majestic concept, giving it a second life.

The once unusable building became a large campus from where thousands of students graduate each year.



Area	16 000 m <sup>2</sup>
Time of Completion	Two years and a half



## SERAIL DER EL AMAR

Location: Der el Amar, Lebanon  
Type: Public Building  
Year: 1998  
Work: Restoration

Our main target in every restoration project is to preserve the identity of the original concept. Therefore, we interfere slightly and maturely on the building to redefine its own value.

In fact, the palace of the Emir Youssef el Chahabi in the heart of Der el Amar, is a keen example of our architectural interference which intended to emphasize the original Lebanese architectural details.



Area	1 400 m <sup>2</sup>
Time of Completion	One Year



SOUK EL GHAREB

Location: Souk El Ghareb, Lebanon  
Type: Residential Buildings  
Year: 2001 – 2003  
Work: Restoration

The residential buildings of Souk El Ghareb, were slowly deteriorating and an urgent interference was crucial. We worked on 65 buildings, that were for most part in a really bad shape due to the damage caused by time.

A wide scope of the area and the region was made by our firm in order to sort out the most convenient intervention, that aimed on improving the building's shape while preserving the Lebanese architectural identity.

Our work was highly appreciated and we were personally thanked by Patriarch Audi and the Principal Preacher of the Convent.

Area	65 buildings
Time of Completion	Two Years
Achievements	Work on the whole region



Before



After



Before



After



## MAR ABDA'S CHURCH

Location: Der el Amar, Lebanon  
Type: Church  
Year: 2005  
Work: Restoration

Mar Abda is a small church located in the mountains overlooking the peaceful surroundings and beautiful nature of Der el Amar.

Our job consisted of restoring it and repairing the damages caused by time. We also worked on its garden, creating a small landscaped land where one can escape and recollect in peace.



Area	700 m <sup>2</sup>
Time of Completion	Six Months



**ST. GEORGE’S CONVENT**

Location: Souk el Ghareb, Lebanon  
Type: Convent  
Year: 2008  
Work: Restoration

The construction of St. Georges’ Convent was incomplete due to the Lebanese war, that spanned over 30 years.

Our mission was to repair the damage done to the building as well as study the new additions and elements that needed to be reshaped.

We studied the existing structure as well as the extent of the harm done and provided the best solution for the convent and its continuity.

We embedded the spirit followed in the first design and thus obtained, various and traditional elements that gave the facades and spaces a rich sense of identity and belonging.

Area	1 400 m²
Time of Completion	One year
Achievements	Special thanks by the Patriarch





## SCHOOLS



Antelias School



Antelias School



Nabichit School



Batloun School

## FJCONSULTANTS PROJECTS

	CLIENT	LOCATION	AREA m <sup>2</sup>	YEAR
1	Abdo & Youssef Gedeon	Dekwaneh	2010	1988-1990
2	Fouad Zibyan	Semanieh	9856	1999
3	Ministry of Education	Bednayet	8900	1997-1999
4	Ministry of Education	Ersal	9000	1997-1999
5	Ministry of Education	Qobayet	7800	1999
6	Ministry of Education	Qobayet	6500	2000
7	C.D.R	Der el Amar	2500	2000
8	Ministry of Education	Sawfar	6000	2002-2005
9	Ministry of Education	Bwarej – Bekaa	3037	2003
10	Ministry of Education	Tannourine	4000	2005
11	Ministry of Education	Antelias	4200	2005
12	C.D.R	NabiChif	4800	2005
13	C.D.R	Batloun	5000	2005
14	C.D.R	Mechmech	6500	2006
15	C.D.R	Barja	20000	2006-2010
16	Evangelical Synod	Kab Elias	6500	2007-2008
17	C.D.R	Aamatour	2657	2007-2010
18	C.D.R	Der Beba	2700	2007-2011



## ANTELIAS SCHOOL

Location: Antelias, Lebanon  
Type: Governmental School  
Year: 2005  
Work: Design

Our wide experience and expertise spread across all fields of construction, especially in schools designs, since we designed over 15 schools in the past 30 years.

We can thus provide a complete program for construction and functions based on the requirements and standards that we have mastered.

The design of this school in particular is centered on an open courtyard, freeing the heavy functionality of the building. All the functions are designed in order to be around it, thus obtaining a realm of peace where students and teachers can relax after the courses.

The building is a colorful one meant to cheer the visitors by its forms and materials.



Area	4 200 m <sup>2</sup>
Time of Completion	Six months

## NABICHIT SCHOOL

Location: Nabichit, Lebanon  
Type: Governmental School  
Year: 2005  
Work: Design and Supervision

This school is situated in the faraway and peaceful land of Bekaa. The serenity of the surroundings are represented in the purity of the white elements and materials used in the design of this ultra modern building.

Classrooms are centered around an open green courtyard creating a relaxing and refreshing learning experience.



Area	4 800 m <sup>2</sup>
Time of Completion	Two years

## TECHNICAL SCHOOL OF BATLOUN

Location: Batloun, Lebanon.  
Type: Governmental School  
Year: 2005  
Work: Supervision

Our work consisted of supervising the construction of the school of Batloun. We managed the project in order to meet the deadlines and make sure that everything on site went smoothly and according to the planned schedule.

The work was finished and presented on time and the initial concept and drawings were well respected and applied.



Area	5 000 m <sup>2</sup>
Time of Completion	Two years

## COMPLEXES



Beyssour Club



Beyssour Club



Residence Unity



Residence Unity

	CLIENT	LOCATION	AREA m <sup>2</sup>	YEAR
1	Khalil Chahwan	Jadra	540	1982
2	Salim Estfan	Jadra	4285	1982-1983
3	Ghorayeb Company	Spain	16000	1984
4	Hanna El Chaer	Ras Osta	2617	1984-1986
5	Ghattas Family	Ras Osta	1430	1984-1986
6	Hanna El Chaer	Faytroun	4034	1985-1987
7	Mounir Mezher	Nehmeh	10000	1996
8	Mounir Mezher	Nehmeh	10000	1996
9	Mounir Mezher	Chouaifat	12000	1997
10	Fayssal Wahab	Aley	12000	2002
11	Sheikh Badih Hobeich	Hrajel	40000	2005
12	Sheikh Adel Merhej	Dhour El Choueir	3134	2005
13	Raja Aridi	Baissour	6000	2008-2009
14	Badawi Group	Byakout	13420	2008- 2011
15	Badawi Group	Nabay	37623	2011-2011
16	Abd el Meneem Ariss	Majdelbana	4705	2011



## BEYSSOUR CLUB

Location: Beyssour, Lebanon  
Type: Leisure Complex  
Year: 2008 - 2009  
Work: Design

In order to be able to enjoy a private and relaxing environment, a complex of residential villas was developed in the rich environment of Beyssour. Close to the rivers and forests, Beyssour enjoys a calm and fresh atmosphere. Our work consisted on implementing the constructions that have the typical Lebanese features, along with a touch of modernism. Quiet colors were used in order to portray the peacefulness of the land.

Water fountains and strips were introduced into the project in order to add more charm to the place. Beyssour inhabitants can now enjoy a luxurious and calm piece of nature, away from the heaviness and stress of everyday's life.

Various functions are also provided in this project such as a restaurant and a leisure club where the residents can benefit from different activities inside a rich architectural space.



Area	6 000 m <sup>2</sup>
Time of Completion	Four Months

## BYAKOUT RESIDENCES

Location: Byakout, Lebanon  
Type: Residential Complex  
Year: 2010 - 2011  
Work: Design

This complex is a series of small buildings located next to one another and divided on two levels. Two options were developed with the same concept: creating a warm feeling for the project, where everyone feels at home.

This is portrayed in the villa-like design of the buildings. The difference in the two options remains mainly in the color usage where in the project warm colors were used in order for it to have a welcoming aspect.



Area	13 420 m <sup>2</sup>
Time of Completion	Two Months

## BREEZE

Location: Nabay, Lebanon  
Type: Residential Complex  
Year: 2011  
Work: Design and Supervision

Located in the heart of the Lebanese mountains, Breeze is a combination of a multitude of villa – like houses, that make everyone feel at home.

This rich complex has the advantages of providing the inhabitants with a sense of peace, tranquility, and belonging to a small unified community.

The designs embrace these features that vary according to the type of houses built, while preserving a harmonious feel between the different concepts.

Want to get lost within the tranquility of nature and get out of the city while still being close to it?

Breeze is your answer.



Area	37 623 m <sup>2</sup>
Time of Completion	One year



## RESIDENTIAL



Ghazir Housing



The Living



White Safra



Modern Pearl

## FJCONSULTANTS PROJECTS

	CLIENT	LOCATION	AREA m²	YEAR
1	Salim Moughamess	Deir Dourit	843	1980-1981
2	Georgette Khoury	Baabda	964	1981-1982
3	Rachid & Rafic El-Kadi	Baalechmey	585	1981-1982
4	Jamal Abou Hamdan	Gharifeh	261	1981-1982
5	Mary Raidi	Kfour	435	1981-1983
6	Youssef Bassil	Bseba	1324	1981-1983
7	Youssef Bassil	Bseba	276	1981-1983
8	Maroun Eid	El Moutelleh	480	1981-1983
9	Nassib Abou Hamdan	Gharifeh	1285	1982
10	Nassar Harb	Gharifeh	325	1982
11	Ghassan Harb	Baaklin	2845	1982
12	Makram Yaghi	Gharifeh	300	1982
13	Boutros Mounseh	Werdenieh	205	1982
14	Antoine Hatem	Beiteddine	165	1982-1983
15	Maurice Abou Jaoude	Jal El Dib	188	1982-1983
16	Osman Ahmad Chatilla	Dibieh	1576	1982-1983
17	Samia Matta Nasser	Bseba	495	1982-1983
18	Antonio Badawi	Zouk Mosbeh	1486	1982-1984
19	Hanna El Chaer	Fanar	3036	1984-1985
20	Jirji El Chaer	Jbeil	248	1984-1985
21	Hanna El Chaer	Jbeil	2163	1984-1985
22	Adel Tarabelh	Blat	2515	1984-1986
23	Antoine Achkouti	Naccache	2046	1985
24	Hanna El Chaer	Zouk Mosbeh	7300	1985
25	Georges Badawi	Mansourieh	2495	1985-1986
26	Georges Badawi	Zouk Mikhael	1854	1985-1986
27	Georges Haddad	Zouk Mikhael	760	1985-1986
28	Reine Ghosson	Bouchrieh	1649	1985-1986
29	Anis Zaidan	Dekwaneh	678	1986
30	Ghazi Ghattas	Mansourieh	1603	1986
31	Jirji El Chaer	Mezher	1468	1986
32	Georges Badawi	Jbeil	499	1986-1987
33	Salim & Lourice Yammine	Zouk Mosbeh	224	1986-1987
34	Adel & Nabil Tarabelh	Antelias	2680	1987
35	Adel Tarabelh	Naccache	2110	1987
36	Khalil Saade	Zouk El Khrab	930	1987
37	Nouhad Nohra	Broummana	1296	1987-1988
38	Adel Tarabelh	Laklouk	687	1987-1989
39	Adel Tarabelh	Zouk El Khrab	1926	1988-1991

## FJCONSULTANTS PROJECTS

	CLIENT	LOCATION	AREA m²	YEAR
40	Joseph Abu Abboud	Dekwaneh	4550	1988-1991
41	Anis Zaidan	Mansourieh	2880	1989
42	Elias Tanious Azzi	Ballouneh	190	1989
43	Michel Chrabieh	Zouk El Khrab	592	1991
44	Georges Badawi	Zouk Mosbeh	550	1991-1993
45	Georges Badawi	Zouk Mosbeh	800	1991-1993
46	Georgette Khoury	Hadath	2200	1992-1994
47	Georgette Khoury	Hadath	400	1993
48	Jean Yamazian	Jdeideh	400	1993
49	Abdallah Saab	Achrafieh	4300	1994
50	Georges Younes	Villa Naccache	2200	1994
51	Nadim Sawaya	Achrafieh	6800	1994
52	Mounir Mezher	Daher El Magharah	1700	1995
53	Ziad Ghattas	Furn El Chebbek	4800	1997
54	Ziad Ghattas	Ajaltoun	3200	1999
55	Atef Zlaket	Der el Amar	900	2001
56	Toufic Merhi	Bsatine	1000	2004
57	Sheikh K. El Rached	Chbenieh	1200	2004
58	Mostafa Saad	Jeb Jannine	750	2004
59	Nabil Karam	Achrafieh	4200	2004-2005
60	Chafic El Halabi	Falougha	3000	2006
60	Chafic El Halabi	Falougha	3000	2006
61	Samer Bou Reslan	Ras El Maten	1500	2007
62	Youssef El Jasem	Qatar	3300	2007
63	Sheikh M. Al Thani	Ojman	8000	2006
64	Atef Zalaket	Der el Amar	1200	2008
65	Badawi Group	Adma	3770	2008-2009
66	Badawi Group	Zouk Mkhayel	3210	2009
67	Badawi Group	Zouk Mkhayel	2461	2009
68	Badawi Group	Ghazir	3600	2009
69	Badawi Group	Jeita	3320	2009
70	Badawi Group	Bmareim	3855	2009-2011
71	Badawi Group	Bmareim	2102	2009-2011
72	Ghaleb Ghanem	Villa Baskinta	1556	2010
73	Abdel Menhem Aris	Majdelbaana	7841	2010-2011
74	Abdel Menhem Aris	Aley	2200	2010-2011
75	Sheikh M. Ben Jaber Al Thani	The Pearl	1376	2010-2011
76	Sheikh M. Ben Jaber Al Thani	The Pearl	1940	2010-2011
77	Colonel Saikali	Shelly	1520	2010-2011
78	Sheikh M. Ben Jaber Al Thani	The Pearl	1940	2010-2011

## ZLAKET'S VILLA

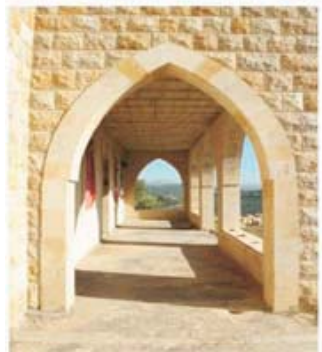
Location: Der el Amar, Lebanon  
Type: Residential Villa  
Year: 2004  
Work: Design and Supervision

The Zlaket family wanted their warmth to be reflected in the features of their house, located on a hill overlooking the unique village of Der el Amar.

The result was a 2 storey villa, that embodies elements of the typical Lebanese architecture, designed elegantly, along with a rich landscape and garden.



Area	1 200 m <sup>2</sup>
Time of Completion	Two years



## PALACE OJMAN

Location: Ojman, UAE  
Type: Residential  
Year: 2006  
Work: Design

Our office was approached in order to be the designer of a palace located in the heart of Ojman, and that extends over a huge area of land.

Our aim with this project was to implement the Arabic features found in palaces, in a soft modern approach. We like to conserve the traditions of our ancestors, as well as add our personal touch to it, making it unique and different from the rest of the designs, and this project is no exception.

Different constructions have been built on this site each hosting different functions, from private to guest housing, all interconnected by internal landscaping and gardens, illustrating the inhabitants needs of privacy.

We have also designed rich green spaces full of natural beauty and variety. Thanks to the architectural spaces designed, the inhabitants really feel the grandiosity of living in such a distinguished palace.



Area	8 000 m <sup>2</sup>
Time of Completion	Two Months

## RISE

Location: Ashrafieh, Lebanon  
Type: Residential Building  
Year: 2008  
Work: Design

In the very heart of Beirut, rises this elegant and tall residential building. With its simple shape and rich colors, Rise symbolizes the modern approach to construction where the function is reflected by the outside form; the living rooms are embraced by the oval balconies, and vertical elements define various other functions of the apartments such as kitchens and bedrooms.

The interconnection between them is carefully studied, and the overall harmonious shape is emphasized. Elegance and simplicity are the keywords for this design.



Area	4 200 m <sup>2</sup>
Time of Completion	Two Months

## WHITE SAFRA

Location: Safra, Lebanon  
Type: Residential Complex  
Year: 2008  
Work: Design

Our goal was to design a peaceful white haven, where one can relax away from the city.

The use of colors and materials are critical elements we used in this project in order to achieve our goal, obtaining three blocks interconnected by a glassed vertical circulation that permits light to be shed on all the volumes that form this project.

The rotation of the second parts of the block serves that purpose as well, by providing light to the inhabitants and allowing them to enjoy the views shed upon them.



Area	3 000 m <sup>2</sup>
Time of Completion	One Month

## NUMBER 7

Location: Zouk, Lebanon  
Type: Residential Building  
Year: 2009  
Work: Design

Number 7 is a residential building in the Zouk area that overlooks the sea, providing a refreshing view from which the inhabitants benefits, thanks to the design of the floors, that are studied in a way to make the most out of the location.

A shopping glass gallery is located on the ground of the building, attracting visitors from the surrounding neighborhoods, and stamping the Number 7 in their minds.



Area	3 210 m <sup>2</sup>
Time of Completion	Two Months

## ZOUK 9

Location: Zouk, Lebanon  
Type: Residential Building  
Year: 2008  
Work: Design

This construction is a luxurious building with one apartment on each floor. The elegant brown of the materials enhances the simple yet refined shape.

The first two floors are commercial stores with a 5m gallery above them, forming the creative base of the project that follows the sloppy nature of the land where it is located



Area	2 461 m <sup>2</sup>
Time of Completion	One Month

## GHAZIR HOUSING

Location: Ghazir, Lebanon  
Type: Residential Building  
Year: 2009  
Work: Design

Ghazir's black boxes are a representation of our modern way of living inside cubes.

In order to break free from these forms, several elements have been introduced changing the pure shape, while changing its colors and materials, infiltrating us with a ray of modernist hope.



Area	3 600 m <sup>2</sup>
Time of Completion	Three Months

## J LIVING

Location: Jeita, Lebanon  
Type: Residential Building  
Year: 2009  
Work: Design

The urban myth has enveloped the city, causing the loss of green spaces. This is represented in the design, where the clear division between the urban fabric (the grey material) and nature (the white material) is distinct and sharp, as there is no interconnection between them.

Interior and approximate green areas have been created in order to introduce as much greenery as possible in this representation of the concrete cities we are living in.



Area	3 320 m <sup>2</sup>
Time of Completion	Two Months

## THE CONQUEROR

Location: Aaley, Lebanon  
Type: Residential Building  
Year: 2010 - 2011  
Work: Design

Against all odds, Aaley is standing tall again, trying to forget the tragedy it was part of some 30 years ago.

This project in particular is located where an ancient building was devastated by war. It was destroyed and re-constructed several times.

Our concept was thus to recreate this surviving element that represents the true Lebanese spirit. A modern yet subtle approach was used, where the vertical circulation is well divided from the rest as it was the only element for escape back then. Glass windows were used in order for the inhabitants to be able to enjoy the view and relax, forgetting their tragedies.

A salute to their ancestors was made with the use of circular openings in the giant red wall located on the view in order for it not to block it completely, as well as to remind them how they used to peek to the outside world, seeing without being seen.



Area	2 200 m <sup>2</sup>
Time of Completion	One Month

## MODERN PEARL

Location: Qatar  
Type: Residential Villa  
Year: 2011  
Work: Design

This dreamy villa provides a safe and modern oasis for the residents away from the stress of the daily life. Surrounded by greenery and waterfalls, the residents feel at ease, and can reconnect peacefully with nature.

Transparent wall glaze allow the residents to fully benefit from the sea view, giving a feel of a minimum of boundaries between them and the outside world.

A free and daring approach is our response to this luxurious location.



Area	1 376 m <sup>2</sup>
Time of Completion	One month

## PEARL 23

Location: Qatar  
Type: Residential Villa  
Year: 2011  
Work: Design

A modern twist was added to the typical Arab features used when designing in the pearl. This touch is what makes our design blends well with the surroundings, yet unique to the eye.

Its catchy and grandiose entrance, welcomes the visitors, and the rich earthy colors used make them feel at ease.

The inhabitants enjoy lvarious facilities, the most important one being an outside swimming pool that gives on the infinite sea.



Area	1 376 m <sup>2</sup>
Time of Completion	One month

## PEARL 24

Location: Qatar  
Type: Residential Villa  
Year: 2011  
Work: Design

This villa is designed with the same rich style, emphasizing its features and welcoming the visitors, a characteristic often found among the inhabitants of Qatar.

A water fountain on the entrance gives a warm feeling and an outside open air pool provide endless pleasures for the residents.

Pearl 24, another luxurious feel to design.



Area	1 940 m <sup>2</sup>
Time of Completion	One month

## MODERN 24

Location: Qatar  
Type: Residential Villa  
Year: 2011  
Work: Design

The design of this proposal embodies the new approach adopted in habitations nowadays, along with conserving the traditional Arab features.

This villa, also located in the pearl, is rich with its various elements and textures.

The original touch added by the details makes it stand out from the rest and leaves a stamp in the visitor's mind.



Area	350 m <sup>2</sup>
Time of Completion	One month

## CHOUFANY'S VILLA

Location: Roumieh, Lebanon  
Type: Residential  
Year: 2011  
Work: Design

Overlooking the Beirut Coast, this villa is well nestled in the area of Roumieh. Our modern approach was in response to the clients' needs, as well as the peaceful environment.

Big open windows were used in order to make the most out of the view and the surroundings.



Area	350 m <sup>2</sup>
Time of Completion	One month





